



SIDNEY COLWYN FOULKES

KS2 Learning Resource

Created in 2021 for the Curriculum for Wales, this resource is based on museum and archive resources held at Conwy Culture Centre.

The activities are designed to support schools in their requirement to explore Welsh businesses, cultures, history, geography, politics, religions and societies.

The activities are cross curricular with suggested Statements of what matters from AOLES. Teachers can refine each activity to meet appropriate levels of progression for their pupils.

INTRODUCTION

Foulkes was a local Welsh man who at the age of 16 took over the family building business after his father died. He worked very hard to achieve his ambition of becoming an architect. He designed many impressive buildings in and around Colwyn Bay and across North Wales, and was seen as an innovator of social housing. His son and grandson continue his work from the London office.

THIS ACTIVITY PACK

These activities are designed to work with a bilingual video aimed at KS2. In the video, a computer virus is threatening to delete the archive records of Sidney Colwyn Foulkes. The archive team must work quickly to visit some of the significant sites in the area, to preserve the information about his life in the area.

The video that accompanies this resource can be viewed here:

https://youtu.be/4XEkadSq_Gk

Please Note:

Website suggestions are recommended for teacher use only. These should be thoroughly checked for suitability if allowing pupils to use the websites for research.

CONTENTS

Who was Sidney Colwyn Foulkes?	4
Looking at his life	4
Looking at his design work	6
Looking at his legacy and Colwyn Bay	8
Appendix A -Observation Questions	9
Appendix A - Answers	10
Appendix B – Buildings resource	11
Appendix C – Resource: Directions / Gorchmynion	12
Appendix D – Resource Vocabulary bingo!	13
Other useful links	14

WHO WAS SIDNEY COLWYN FOULKES?

Sidney Colwyn Foulkes was the son of a local builder who became one of the most important architects of the 20th century. Sidney's father went bankrupt when he was a boy, forcing him to work to support the family. However, young Sidney had big ambitions; he wanted to become an architect. In 1910, talented Sidney was offered a scholarship to Liverpool University's School of Architecture when he presented his portfolio of designs. He designed many buildings in the area, some of which still stand today and was seen as an innovator of social housing. His son and grandson continue his work from the London office. Further information can be found here:

<https://colwynbayheritage.org.uk/sidney-colwyn-foulkes-1884-1971-life-story/>

LOOKING AT HIS LIFE

<p>Using multimedia information from the video, and this website:</p> <p>https://colwynbayheritage.org.uk/sidney-colwyn-foulkes-1884-1971-life-story/</p>	<p>AOLE</p>	<p>Statement of What matters</p>
<p>After watching the film, watch again to find the answers to Appendix A.</p> <p>Find the meaning of, and practise saying the vocabulary in Appendix D then play bingo as you hear the words in the film.</p> <p>(9 and 16 word versions available)</p>	<p>Languages and Literacy</p>	<p>Understanding languages is key to understanding the world around us.</p>
<p>Using multimedia stimuli create a timeline to show what you believe are the key events of his life. Consider the difference between facts, opinion and beliefs. Add images to the timeline. You could add photographs from the internet or create your own images. Use drama techniques to create freeze frame images.</p> <p>Create an interview of the life of Sidney Colwyn Foulkes. Work in pairs, with one person interviewing and one person being Sidney Foulkes, or another local talking about him. Plan it together, create a script, then perform/record the interview.</p>	<p>Humanities</p> <p>Languages Literacy and Communication</p> <p>Languages Literacy and Communication</p>	<p>Enquiry, exploration and investigation inspire curiosity about the world, its past, present and future.</p> <p>Understanding languages is key to understanding the world around us.</p> <p>Expressing ourselves through languages is key to communication</p>

<p>Using multimedia sources including the video and website, create and deliver your own presentation about key events of his life and some of his main achievements.</p>	<p>Languages Literacy and Communication</p>	<p>Expressing ourselves through languages is key to communication</p>
<p>In the link about his life story there are details of how in approximately 1950 the bank called Sidney in to say he was £350 overdrawn. Discuss the idea of income and expenditure, and compare how much money that would equate to today in line with inflation. Sidney had to get investors to fund his projects. Builders and architects have to quote prices and work within budgets. Set a budget to refurbish the school classroom, then use prices from school supply catalogues e.g. YPO, to decide what your group would prioritise spending the money on, in order to stay within the budget.</p>	<p>Mathematics and Numeracy</p>	<p>The number system is used to represent and compare relationships between numbers and quantities.</p>
<p>Borrow the 'Work' handling box and use items to introduce the topic e.g. briefcase, cigar tin, ashtray, money envelope, multi-function ruler, keys (photographs show he was a smoker). Begin being detectives: Who could they belong to? Why are they important to Colwyn Bay?</p> <p>Use these items to support creative activities e.g. role play, role on wall, descriptive writing / drawings.</p>	<p>Expressive Arts</p>	<p>Creating combines skills and knowledge, drawing on the senses, inspiration and imagination.</p>

LOOKING AT HIS DESIGN WORK

<p>See Appendix B– buildings or these websites for information and photographs of his buildings.</p> <p>https://colwynbayheritage.org.uk/sidney-colwyn-foulkes/</p> <p>http://www.colwynbaycivicsociety.co.uk/about-colwyn-bay/sidney-colwyn-foulkes/</p>	<p>AOLE</p>	<p>Statement of What matters</p>
<p>Using a map of Colwyn Bay, either paper or digital e.g. google maps, plot the location of his & his father’s buildings. Colour code, with a key to tell which person designed which building.</p>	<p>Humanities</p>	<p>Enquiry, exploration and investigation inspire curiosity about the world, its past, present and future.</p>
<p>Use the resource in Appendix C to practise giving directions in Welsh. Use street view or local maps to plan the route and direct a partner, or to direct a sprite, using simple coding. J2E on Hwb can be turned to Welsh to practise some of the vocabulary in Appendix C.</p>	<p>Languages Literacy and Communication</p>	<p>Understanding languages is key to understanding the world around us.</p> <p>Computation is the foundation of our digital world.</p>
<p>From a selection of Sydney’s buildings choose your favourite and write an estate agent’s description of it. Look at some real estate agent descriptions to get you started. Will you imagine you are an estate agent describing the building at the time it was built, or in today’s times? Include how the building was/is used to show the business or community opportunities.</p>	<p>Languages Literacy and Communication</p>	<p>Expressing ourselves through languages is key to communication.</p>
<p>Choose one building. Use existing photographs / google street view / Appendix B. Zoom into one interesting section, then draw a small section of it to see the architectural detail e.g. the pattern of the bricks in part of Hesketh Road hospital are soldier course brickwork (bricks laid on end) / look for keystones on buildings (a keystone is the central wedge-shaped arch stone at the</p>	<p>Expressive Arts</p>	<p>Exploring the expressive arts is essential to developing artistic skills and knowledge and it enables learners to become curious and creative individuals.</p>

<p>crown of an arch, put in last) / the joints of the roof /window shapes etc.</p>		
<p>Design a new building for Colwyn Bay. It could be a practical building or more of an art / sculpture / landmark. Decide which medium to use to share your design idea e.g. drawing / digital / model. Reflect on some of the features of existing buildings in Colwyn Bay and decide which of these, if any, you will include in your design.</p>	<p>Expressive Arts</p>	<p>Creating combines skills and knowledge, drawing on the senses, inspiration and imagination.</p>
<p>Use appropriate measuring equipment to measure outdoor spaces and existing building features. Then use ratio in your building designs to create them to scale.</p>	<p>Mathematics and Numeracy</p>	<p>The number system is used to represent and compare relationships between numbers and quantities.</p>
<p>Choose the site for your new building. Create and deliver the 'pitch' to the council to persuade them, giving reasons why it should be built in Colwyn Bay (community need / transport links / tourism and hospitality trade etc). Groups create a town planning council; they are allowed to accept 3 plans out of 6 that are pitched. They must decide together which 3 they are going to allow and why.</p>	<p>Languages Literacy and Communication</p>	<p>Expressing ourselves through languages is key to communication</p>
<p>Explore properties of building materials. Choose appropriate building materials for your design. Be able to explain why these choices are appropriate.</p>	<p>Science and technology</p>	<p>Matter and the way it behaves defines our universe and shapes our lives.</p>
<p>Arrange an interview with an architect to talk about their job, how they trained, what they like about it etc.</p>	<p>Languages Literacy and Communication</p>	<p>Understanding languages is key to understanding the world around us.</p>
<p>Plan a school landscape / playground / garden project e.g. renovate a school garden, or create a forest school area. Measure the space, calculating area and perimeter. Create a scale plan on squared paper. Cost the materials / furniture / equipment for the project; either provide a price list for pupils, or support pupils to find prices of items through</p>	<p>Mathematics and Numeracy</p>	<p>The number system is used to represent and compare relationships between numbers and quantities.</p> <p>Geometry focuses on relationships involving shape, space and</p>

internet research. Teachers could provide pupils with a budget to work to.		position, and measurement focuses on quantifying phenomena in the physical world.
Use clay to create a model of one of Sidney Foulkes buildings looking closely at the different shapes used in the architecture. Put the class creations together to make a model town and add landscaping details.	Expressive Arts	Creating combines skills and knowledge, drawing on the senses, inspiration and imagination.

LOOKING AT SIDNEY COLWYN FOULKES'S LEGACY AND COLWYN BAY

Which of his buildings have been destroyed / are still standing – add additional colour codes to your map to show which buildings are no longer there. Watch this Then and Now film or you could use google maps / street view, or take a copy of this Victorian Ordnance Survey of Colwyn Bay 1888-1913 and walk around the town to find changes.	Humanities	Enquiry, exploration and investigation inspire curiosity about the world, its past, present and future.
Look at the building uses – what were they originally used / designed for and how are they used today - why do you think some have changed? Explore how the main streets might have looked in different decades.	Humanities	Enquiry, exploration and investigation inspire curiosity about the world, its past, present and future.
Compare the cost of one of his buildings with the cost of a building today e.g. Coed Pella. Calculate the differences in value between imperial and metric. Explore the concept of inflation and the value of items today compared to in the 1920s. Compare the differences in income and expenditure today compared to a different decade in Sidney's life.	Mathematics and Numeracy	The number system is used to represent and compare relationships between numbers and quantities.

APPENDIX A - OBSERVATION QUESTIONS

Can you answer these questions after watching the video?

1. Why was Sidney Foulkes given 'Colwyn' as his middle name?
2. Who built St John Methodist Church in Colwyn Bay?
3. How old was Sidney when he started running the family building business?
4. What was Sidney's dream job?
5. What year was Colwyn Bay Hospital built?
6. What important design feature did Sidney use at the Elwy Road Housing Estate and why?
7. What character could Vickie see inside the canopy above the door? Have you ever noticed it before?
8. Sidney designed some of the shops in Colwyn Bay. Vickie looks at a shop called 'Peacocks', but what was it originally called?
9. Vickie is confused. Which shop does she wonder if Sidney built?
10. What could you buy from the shop Longmans?

APPENDIX A – ANSWERS

1. Why was Sidney Foulkes given 'Colwyn' as his middle name?

He didn't have one so his parents thought one up on the spot when he got baptised

2. Who built St John Methodist Church in Colwyn Bay?

Sidney's father

3. How old was Sidney when he started running the family building business?

16

4. What was Sidney's dream job?

To be an architect

5. What year was Colwyn Bay Hospital built?

1925

6. What important design feature did Sidney use at the Elwy Road Housing Estate and why?

Open grass space in front of the houses so no car could park. It made it a safe place to play out.

7. What character could Vickie see inside the canopy above the door? Have you ever noticed it before

An owl – from Owl and the Pussy Cat. She says Mad Hatter

8. Sidney designed some of the shops in Colwyn Bay. Vickie looks at a shop called 'Peacocks', but what was it originally called?

Woods

9. Vickie is confused. Which shop does she wonder if Sidney built?

KFC

10. What could you buy from the shop Longmans?

Books

APPENDIX B – BUILDING’S RESOURCE

Find further pictures, and building information here: [Sidney Colwyn Foulkes Archives - Colwyn Bay Heritage](#)



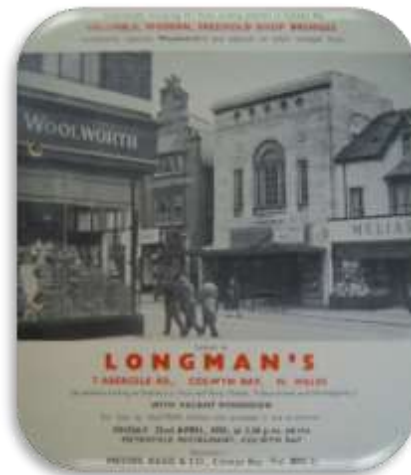
Bryn Eglwys, Rhos on Sea



Colwyn Bay Hospital



Colwyn House, (Woods) Station Rd



7 Abergele Rd



Wren's Nest Lansdowne Rd



Deacon's Bank (Royal Bank of Scotland), Conway Rd

APPENDIX C – RESOURCE: DIRECTIONS / GORCHMYNION

Esgusodwch fi!	-	-	Excuse me
Alla i eich helpu?	-	-	Can I help you?
Beth ydy'r ffordd i'....?	-	-	What is the way to the.....?

Trowch i'r chwith	-	-	Turn right
Trowch i'r dde	-	-	Turn left
Ewch syth ymlaen	-	-	Go straight ahead

Rhwng	-	-	between
Agos	-	-	near
Ar ôl	-	-	after
Cyn	-	-	before
Ty ôl	-	-	behind
O flaen	-	-	in front of

y goleuadau traffig	-	-	the traffic lights
yr orsaf	-	-	the station
yr ysbyty	-	-	the hospital
yr eglwys	-	-	the church
yr ysgol	-	-	the school

APPENDIX D – RESOURCE VOCABULARY BINGO!

pensaer	dref	achub
angen	adeiladydd	enw
busnes	adeilad	adeiladau

teulu	enw	achub	diogel
adeiladydd	o gwmpas	cymuned	angen
busnes	pensaer	adeiladau	pobl
archif	dref	sylwi	adeilad

OTHER RESOURCES

To request a visit to Rydal Penrhos buildings, with Sidney Colwyn Foulkes links contact events@rydalpenrhos.com

Useful Links

[Sidney Colwyn Foulkes - Colwyn Bay Heritage](#)

[Then and Now film](#)

[Sidney Colwyn Foulkes \(1884-1971\) - Life Story - Colwyn Bay Heritage](#)

[Sidney Colwyn Foulkes - Wikipedia](#)

[History Points - Colwyn Bay postcard: Sidney Colwyn Foulkes](#)

[A quiz based on buildings in the local area. The 'Armchair quiz' created by Colwyn Bay Heritage Group](#)

[Search Conwy Archives Online Catalogue](#)

[Imagine Trail Heritage App](#)

Handling collections

Collections of themed objects are available for loan from the Conwy Culture Centre. They can be used to encourage discussion. The boxes can be borrowed with a library card. Contact the library to arrange collection: 01492 576089 / llyfrgell.conwy@conwy.gov.uk

Feedback

Feedback is welcome on this activity pack, as are any additional resources we can use to update it. Please email to: diwylliant.culture@conwy.gov.uk